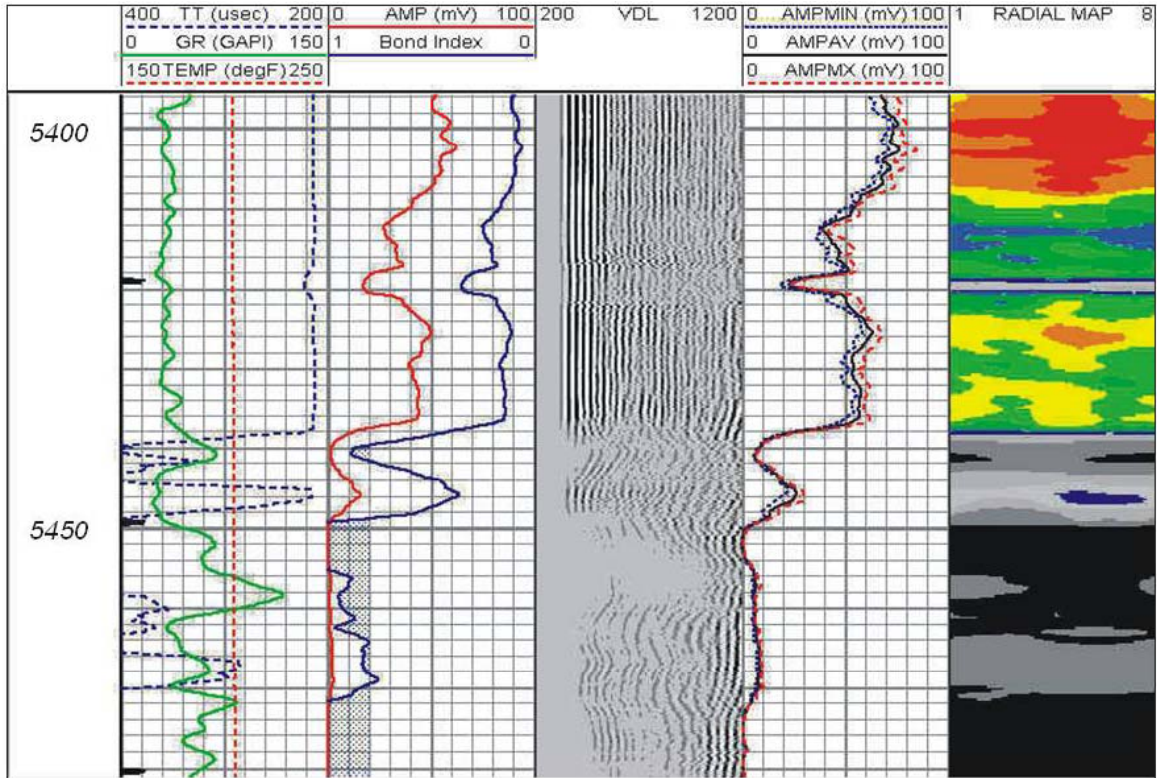


**MULTIPLEX RADIAL BOND TOOL**


The Radial Bond Tool is a single transmitter 10 receiver design. The tool has a 3', 5', eight directional receivers 2-1/2' from the transmitter and a temperature probe. The tool provides an amplitude, transit time, a radial amplitude map of the borehole and can provide a temperature log.

This tool is combinable with a GR/CCL tool placed on top of the Radial Bond Tool.

SPECIFICATIONS		
General Information	Logging Parameters	Limits
<b>Max. pressure:</b> 20.000 psi <b>Max. temperature:</b> 350° F (177° C) <b>Weight:</b> 219 lbs <b>Length:</b> 18.75' <b>Max. OD:</b> 3.125"	<b>Min. Csg. Size:</b> 4.5" <b>Max. Csg. Size:</b> 13.75" <b>Well Deviation:</b> No Limit	<b>Borehole environment:</b> cased, fluid filled holes